

Corn Scouting Calendar



Click on the threat for more information

Insects	VE	V1+	V3+	V6+	V9+	VT	R1	R2	R3	R4	R5	R6
Seedcorn Maggot	█	█	█									
Seedcorn Beetle	█	█	█									
Wireworm	█	█	█	█								
Black Cutworm	█	█	█	█	█							
White Grub	█	█	█	█	█							
Corn Flea Beetle	█	█	█	█	█							
Armyworm		█	█	█	█	█						
Hop Vine Borer		█	█	█	█							
Billbug			█	█	█							
Grape Colaspis			█	█	█	█						
Brown Stinkbug			█	█	█	█						
Common Stalk Borer			█	█	█	█	█					
Corn Rootworm Larvae			█	█	█	█	█	█				
European Corn Borer				█	█	█	█	█	█	█	█	█
Fall Armyworm					█	█	█	█	█			
Southwestern Corn Borer					█	█	█	█	█	█	█	█
Corn Leaf Aphids						█	█	█	█			
Corn Rootworm Adults						█	█	█				
Japanese Beetle						█	█	█	█	█		
Western Bean Cutworm							█	█	█	█		
Corn Earworm							█	█	█	█		
Diseases												
Stewart's Leaf Blight		█	█	█	█	█	█	█				
Goss's Wilt			█	█	█	█	█	█	█	█	█	█
Common Rust				█	█	█	█	█				
Gray Leaf Spot					█	█	█	█	█			
Northern Leaf Blight					█	█	█	█	█			
Southern Rust						█	█	█	█	█		
Fusarium Stalk Rot						█	█	█	█	█		
Gibberella Stalk Rot						█	█	█	█	█		
Tar Spot						█	█	█	█			
Anthracnose Stalk Rot								█	█	█	█	█
Diplodia Ear Rot								█	█	█	█	█
Fusarium Ear Rot									█	█	█	█
Gibberella Ear Rot									█	█	█	█

*™Trademarks of Corteva Agriscience and its affiliated companies. ©2023 Corteva.

Corn Insects

Click on the threat name or image for more information



Wireworm



Seedcorn Maggot



Seedcorn Beetle



Black Cutworm



White Grub



Corn Flea Beetle



Armyworm



Billbug



Grape Colaspis



Hop Vine Borer



Brown Stink Bug



Corn Rootworm Larvae



Common Stalk Borer



European Corn Borer



Fall Armyworm



Southwestern
Corn Borer



Corn Leaf
Aphids



Corn Rootworm
Adults



Japanese Beetle



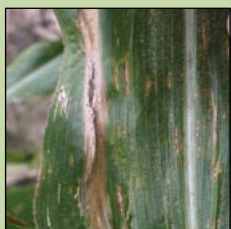
Western Bean
Cutworm



Corn Earworm

Corn Diseases

Click on the threat name or image for more information



Stewart's Leaf Blight



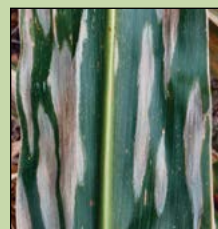
Goss's Wilt



Common Rust



Gray Leaf Spot



Northern Leaf Blight



Southern Rust



Tar Spot



Fusarium
Stalk Rot



Gibberella
Stalk Rot



Anthracnose
Stalk Rot



Diplodia Ear Rot



Fusarium Ear Rot



Gibberella Ear Rot

Soybean Scouting Calendar *



Click on the threat name or image for more information

Pest (Insects & Diseases)	0-1 Month After Planting	1-2 Months After Planting	2 Months to Max Height	Bloom to Pod Fill	Pod Fill to Leaf Drop
Insects					
Bean Leaf Beetle	█	█	█	█	█
Two - Spotted Spider Mite		█	█	█	█
Soybean Aphid			█	█	█
Japanese Beetle			█	█	█
Green Stink Bug			█	█	█
Diseases					
Bean Pod Mottle (BPMV)	█	█	█	█	█
Soybean Cyst Nematode		█	█	█	█
White Mold			█	█	█
Phytophthora Root Rot	█	█	█	█	█
Pythium Root Rot	█	█	█		
Rhizoctonia Root Rot		█	█	█	
Brown Stem Rot				█	█
Sudden Death Syndrome				█	█
Red Crown Rot				█	█
Charcoal Rot					█

*Scouting information based on information from Pioneer, Iowa State University Extension, Purdue University Extension, University of Illinois Extension and the University of Kentucky Extension.



Bean Leaf Beetle



Two-Spotted Spider Mite



Soybean Aphid



Japanese Beetle



Green Stink Bug



Bean Pod Mottle



Soybean Cyst Nematode



White Mold



Phytophthora Root Rot



Pythium Root Rot



Rhizoctonia Root Rot



Brown Stem Rot



Sudden Death Syndrome



Red Crown Rot



Charcoal Rot