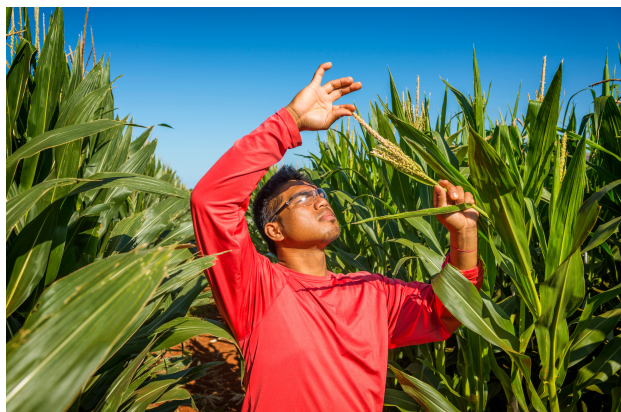


IPM:

A Common-Sense Approach to Pest Management

Growing Healthy Crops

To protect our crops from weeds and insects, DuPont Pioneer uses a method called Integrated Pest Management (IPM) that relies on a combination of common-sense practices. This approach, considered the gold standard in agriculture, is used around the world by organic and conventional farmers to ensure healthy soil and productive crops.



Monitoring

Trained DuPont Pioneer employees regularly monitor fields on foot to look for signs of insect damage or other indicators of potential threats to crops, with the goal of spotting potential problems early. We implement one or more IPM techniques only if a problem is identified.

Prevention

Our IPM program works to maintain healthy crops and prevent pests from becoming a threat by managing the crops with a range of proven techniques.

- **Pest habitats** – We maintain the areas around our crops by mowing tall grass and trimming overgrown foliage to reduce breeding grounds for pests.
- **Physical barriers** – When appropriate, we install physical barriers to keep pests out.
- **Cover crops** – We plant cover crops between planting seasons to maintain healthy soil and prevent erosion.
- **Land management** – We carefully manage the use of land and natural resources as part of our comprehensive soil conservation plan.
- **Selecting pest-resistant varieties** – We use pest-resistant crops to diminish the threat of pests and reduce the potential need to use pesticides.

Established Thresholds

Sighting a single pest does not always mean control is needed. Our IPM program includes established thresholds for each crop. The threshold is the level at which pest populations or environmental conditions indicate that pest control action must be taken to minimize extensive damage to the crop.

IPM:

A Common-Sense Approach to Pest Management

Responsible Use of Pesticides

When prevention is not enough and the threshold level indicates that a crop is at risk, our experts apply U.S. government-approved pesticides to the affected field in a targeted, controlled manner. Unlike pesticides from decades ago, the modern crop protection solutions we employ were developed to target specific pests and weeds, enabling us to use less pesticides to achieve the same positive results – all while protecting the environment.

Regulated Use

We employ highly trained, licensed applicators who follow stringent regulations. All crop protection materials used are regulated by the state and federal governments and are handled and applied according to detailed instruction on the label.

Organic Pesticides

We use many organic pest management products that are also used by organic farmers around the world.

Accountable Operations

Since 2014, DuPont Pioneer has participated in the Kaua'i Good Neighbor Program, voluntarily reporting use of restricted use pesticides to the Hawai'i Department of Agriculture on a monthly basis, with data available for public viewing on the HDOA website. Beginning in 2017, a statewide version of the program allows DuPont Pioneer to share information about crop protection measures taken on its O'ahu farms.

Safety is Our Priority

Safety & Health comes first and is a Core Value of DuPont Pioneer. We ensure that methods used to control pests present the least possible hazard to our employees, the people of the communities in which we operate, and the environment, ensuring productive use of land for generations to come.