

# CORN ROOTWORM

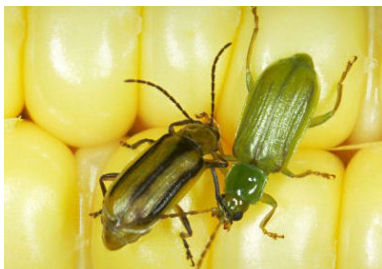
## BEST MANAGEMENT PRACTICES



### Break the Cycle

*Removing the CRW Bt trait from the field for a season can help break the cycle of resistance development*

- Rotate to soybeans or another non-host crop
- Avoid three or more years of continuous CRW Bt trait use
- If low CRW populations are anticipated, consider planting a non-CRW Bt product along with a soil-applied insecticide or Poncho® 1250/ VOTIVO® insecticide seed treatment for additional protection



### Manage Populations

*Know your CRW populations so you can reduce the risk of significant root injury the following season*



- Utilize sticky traps to scout your fields for weekly presence of adult CRW beetles from silking through grain fill
- Use action thresholds to determine whether to apply a foliar insecticide to reduce CRW populations
- Check for root injury to determine the effectiveness of your current management plan

### Protect Yield Potential

*If high CRW populations are anticipated for the upcoming season, utilize multiple modes of action for control*

- Plant a product with multiple modes of action of control against CRW, such as Pioneer® brand Grome® products
- Consider using a CRW Bt-traited product with Poncho® 1250/ VOTIVO® insecticide seed treatment for additional protection
- Application of a soil-applied insecticide in addition to using a CRW Bt-traited product is not recommended for control of CRW except in limited circumstances. Consult with your Pioneer agronomist, extension service, crop consultant, or other local experts for further guidance.



[Pioneer.com/Corn](http://Pioneer.com/Corn)



Consult with your Pioneer sales professional, university extension, crop consultants or other local experts for recommendations when considering a combination of CRW traits and soil applied insecticides.

Soil-applied insecticides should not be necessary for CRW control with pyramided CRW-traited products.

Qrome® products are approved for cultivation in the U.S. and Canada. They have also received approval in a number of importing countries, most recently China. For additional information about the status of regulatory authorizations, visit <http://www.biotradestatus.com/>

Agrisure® is a registered trademark of, and used under license from, a Syngenta Group Company. Agrisure® technology incorporated into these seeds is commercialized under a license from Syngenta Crop Protection AG.

YieldGard®, the YieldGard Corn Borer design and Roundup Ready® are registered trademarks used under license from Monsanto Company. Liberty®, LibertyLink® and the Water Droplet Design are trademarks of BASF.

Herculex® Insect Protection technology by Dow AgroSciences and Pioneer Hi-Bred.

® Trademark of Dow AgroSciences, DuPont or Pioneer, and their affiliated companies or their respective owners.

Liberty®, LibertyLink® and the Water Droplet Design are trademarks of Bayer. YieldGard®, the YieldGard Corn Borer design, and Roundup Ready® are registered trademarks used under license from Monsanto Company.

Agrisure® is a registered trademark of, and used under license from, a Syngenta Group Company.

Agrisure® technology incorporated into these seeds is commercialized under a license from Syngenta Crop Protection AG.

Pioneer® brand products are provided subject to the terms and conditions of purchase which are part of the labeling and purchase documents. <sup>TM, ®, SM</sup> Trademarks and service marks of Dow AgroSciences, DuPont or Pioneer, and their affiliated companies or their respective owners. © 2020 Corteva. 20D-1377