

# AGRONOMIE

## NAVORSINGSINLIGTING



### P64T39R-ONBEPaald

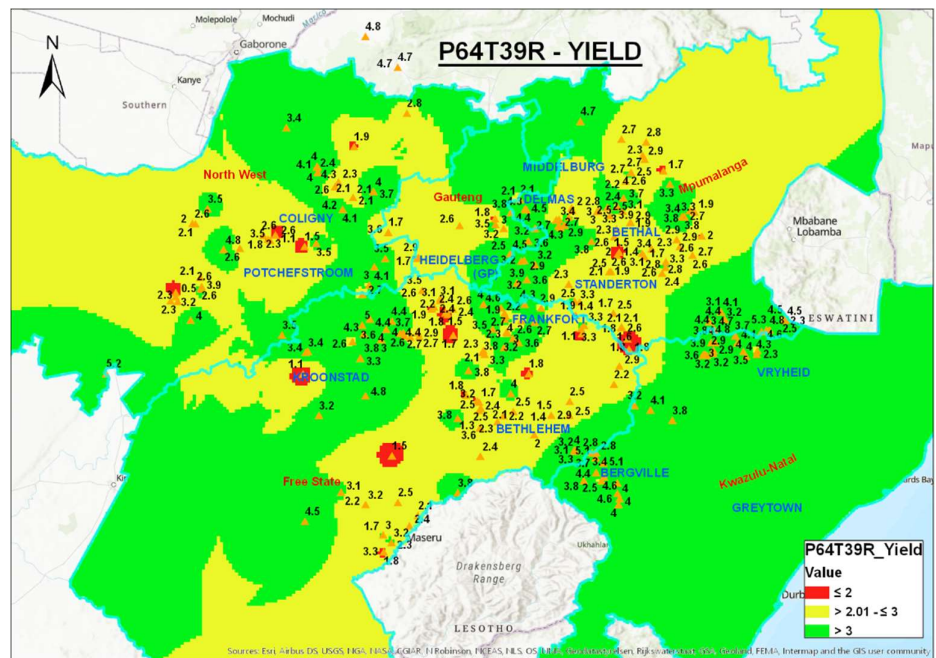
Pioneer Handelsnaam

|                       |      |       |      |
|-----------------------|------|-------|------|
| VRM                   | 6.4  |       |      |
| Produksiegebied       | Koud | Matig | Warm |
| Dae tot 50% blom      | 72   | 60    | 50   |
| Dae van plant tot oes | 154  | 144   | 132  |

- ❖ Plant droëland en besproeiing.
- ❖ Lang groeiseisoen variëteit veral geskik vir koue, matige en warm produksiegebiede.
- ❖ Uitstekende opbrengspotensiaal.
- ❖ Uitstekende droogteverdraagsaamheid.
- ❖ Baie goed aangepas in die Sentrale, Westelike en Oostelike produksiegebiede.
- ❖ Baie stabiele variëteit.
- ❖ Een van die beste kultivars in die LNR sojaboonstrook proewe.
- ❖ Sojaboon met 'n baie goeie peulhoogte en springtraagtheid.

### BELANGRIKE AGRONOMIESE EIENSKAPPE

|                              |           |
|------------------------------|-----------|
| Springtraagtheid             |           |
| Staanvermoë                  |           |
| Hipokotiel lengte            |           |
| Groenstam                    |           |
| Herstelvermoë na hael        |           |
| Knopwortelaalwurm toleransie |           |
| Bosagtig                     |           |
| Wortelmasa                   |           |
| Peulhoogte (cm)              | 17        |
| Planthoogte (cm)             | 98        |
| Hiliumkleur                  | Kleurloos |
| Blomkleur                    | Wit       |
| Tegnologie                   | RR        |



Eienskapsgradering:



Meerjarige opbrengskaart van P64T39R in die sojaboon produksiegebiede van Suid-Afrika.

**Let wel:** P64T39R is een van die beste sojabone op die mark.



The foregoing is provided for informational use only. Please contact your Pioneer sales professional for information and suggestions specific to your operation. 2021 data are based on average of all comparisons made over numerous locations through 2021. Multi-year and multi-location data are a better predictor of future performance. Do not use these or any other data from a limited number of trials as a significant factor in product selection. Product responses are variable and subject to a variety of environmental, disease, and pest pressures. Individual results may vary.



Pioneer Agronomy Sciences

™ & ® Trademarks and service marks of Corteva Agriscience and its affiliated companies. © 2021 Corteva.